



BUILDING ON OUR ASSETS: DATA-BASED APPROACHES TO COMMUNITY-POWERED REVITALIZATION

Cara Bertron
Nick Hamilton
Aaron Bartley
Prashant Singh
Emilie Evans

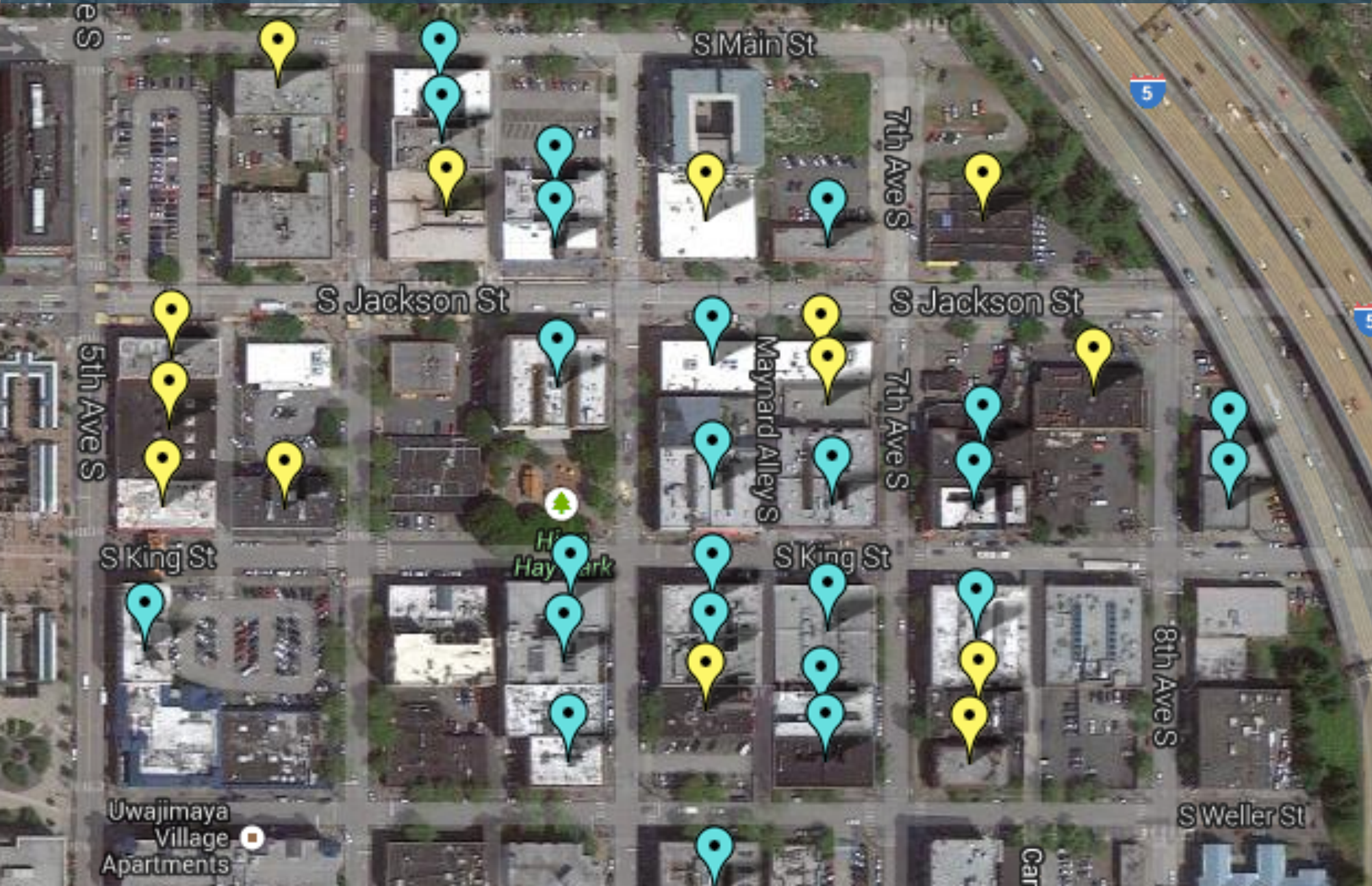
New Partners for Smart Growth
February 13, 2016

COMMUNITY DEVELOPMENT

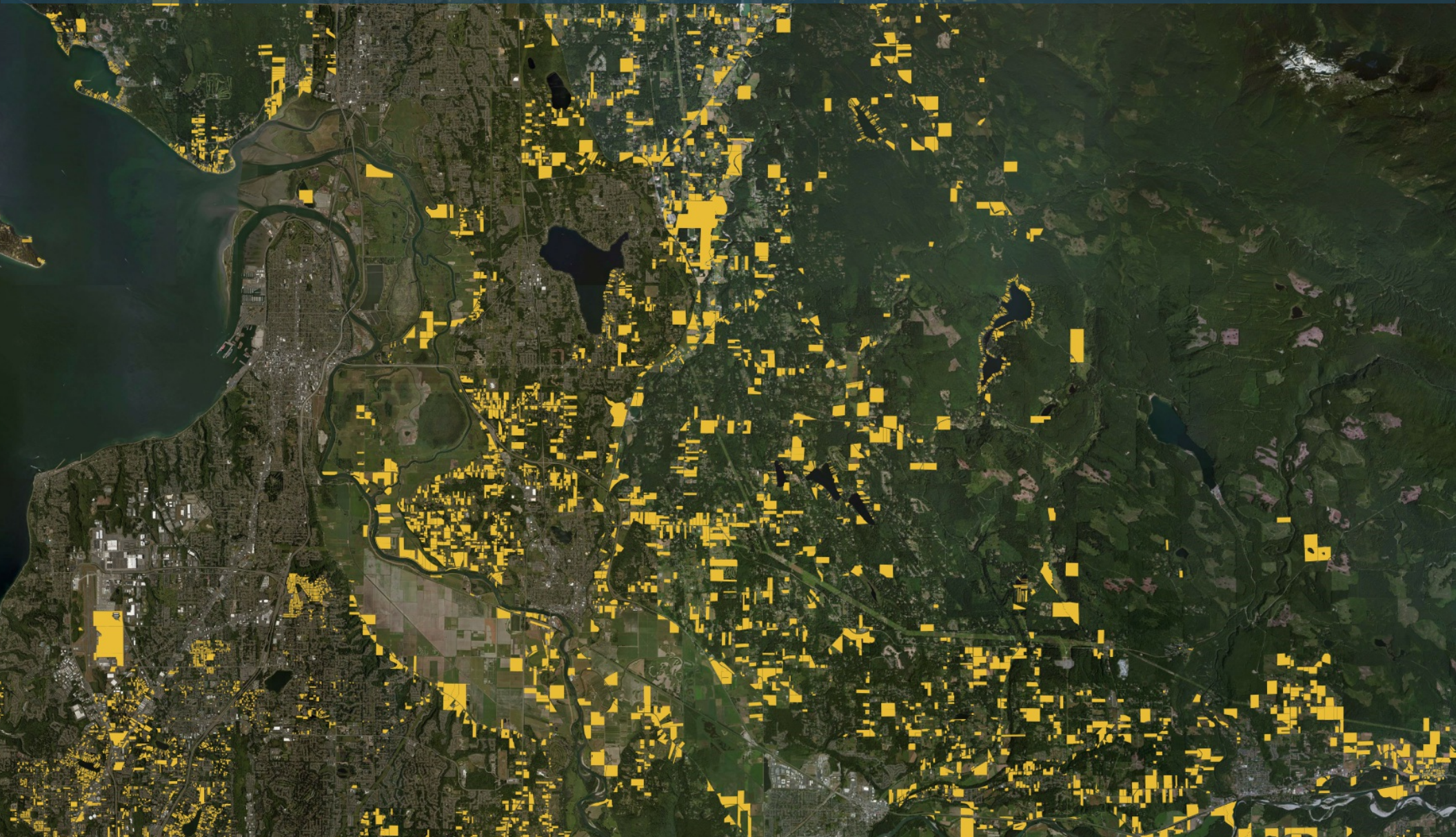


IDEA Space, SCIDpda, Seattle

COMMUNITY DEVELOPMENT



LARGE-SCALE PLANNING



Snohomish County Historic Resource Scan, Washington

REDEFINING PRESERVATION



Preservation Rightsizing Network

REDEFINING PRESERVATION



REDEFINING PRESERVATION



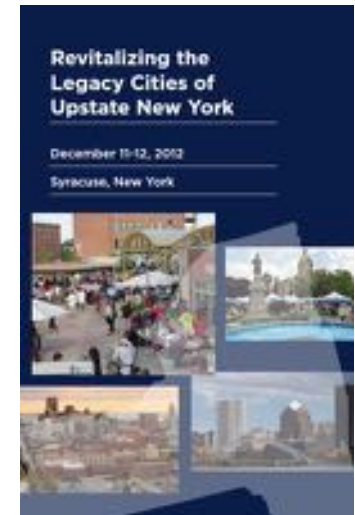
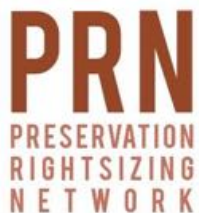
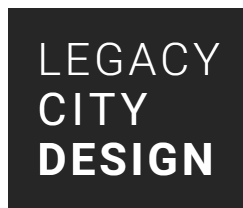
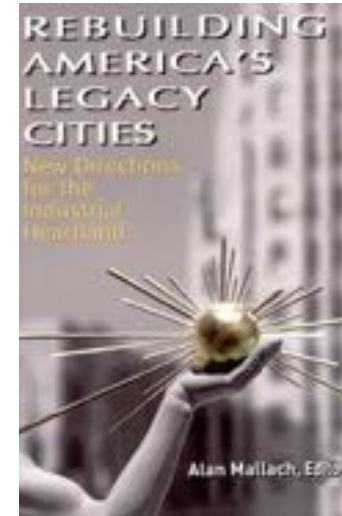
ACTION AGENDA FOR

HISTORIC PRESERVATION

IN LEGACY CITIES

NICHOLAS HAMILTON

DIRECTOR OF URBAN POLICY, THE AMERICAN ASSEMBLY



NICHOLAS HAMILTON

DIRECTOR OF URBAN POLICY, THE AMERICAN ASSEMBLY

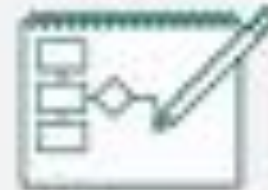
OUR FRAMEWORK FOR CHANGE



Rigorously and objectively analyze city assets, understanding both opportunities and constraints



Develop a realistic vision for the future of the city, grounded in a thorough understanding of its economic geography, the role in its region and its function in the global economy



Design strategies for residential, commercial and industrial areas with approaches tailored to their market potential and also informed by social and environmental factors



Implement innovative economic growth strategies that address the intensity of concentrated poverty in legacy cities, promoting revitalization that not only attracts investment, but also increases opportunities for current residents



Forge supportive partnerships among federal, state and local governments by coordinating efforts to target resources and rework regulations that impede joint efforts, maximizing regional collaboration towards shared benefits



Build the city's ability to execute complex revival strategies by strengthening leadership, improving local health, investing in information infrastructure and supporting a healthy business environment



LocalData

Prashant Singh

prashant@localdata.com

@goLocalData



Pen + paper, long timelines

LocalData is an web-based toolkit that makes it easy to gather and visualize parcel-level data about the environment, local businesses, homes, and people



Celebrity surveyor!

EMILIE EVANS

Director, Rightsizing Cities Initiative

PlaceEconomics

Co-founder, Co-leader

Brick + Beam Detroit

Leadership Team, Secretary

Preservation Rightsizing Network





Relocal

Rightsizing
Cities Initiative
PlaceEconomics

Relocal

Rightsizing

Cities Initiative

PlaceEconomics



Photo: Emilie Evans

DETROIT HISTORIC RESOURCE SURVEY



Photos: Amy Elliott Bragg / Emilie Evans





PUSH

BUFFALO

PEOPLE UNITED  SUSTAINABLE HOUSING



WHY DATA?



WHY DATA?

- 1. TOOL KIT (w/ CASE STUDIES?)
- 2. REFORM POLICIES - NEW DOL
- 3. TAX CREDITS - ID BAR TO PRES
- 4. ~~FINANCE~~ FINANCE VEH
- 5. COMMUNICATIONS STRAT. - COOPERATION
- 6. MAKING (ECON) CASE

WHY DATA?



PRESERVATION AND ENVIRONMENT DATA



LEGACY CITIES



IMAGE: LEGACY CITY DESIGN INITIATIVE

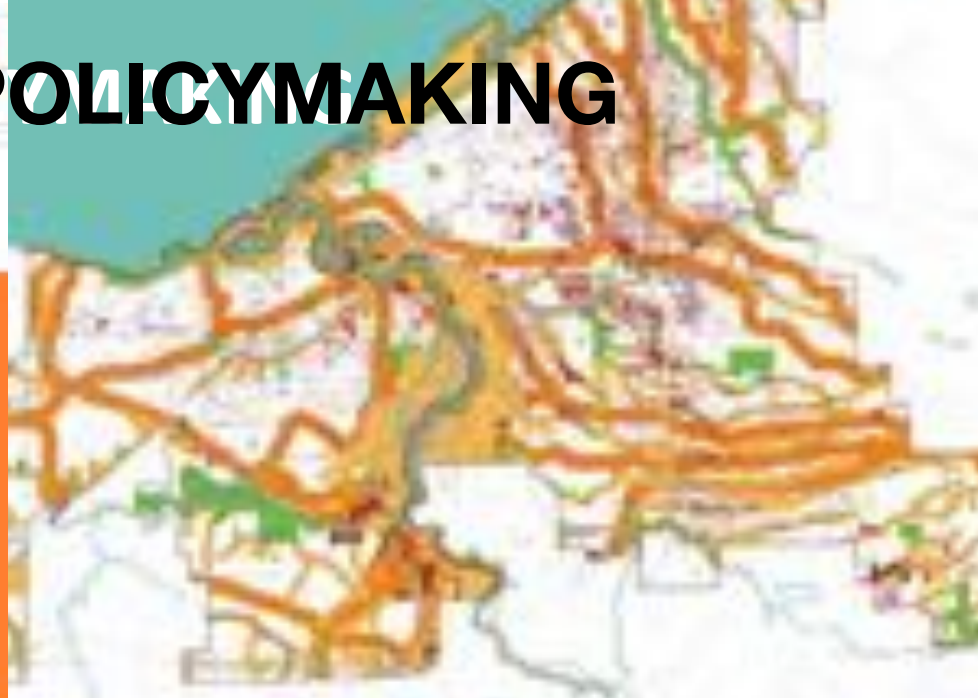
ASSET-BASED REVITALIZATION

IN LEGACY CITIES AND ELSEWHERE, CITIES SEEK TO LEVERAGE UNIQUE ASSETS:

- Human capital, local history and local culture
- Natural resources, geography and existing infrastructure
- Existing market strengths and networks, connections with regional and global economy
- Urban neighborhood characteristics: urban feel, walkability, historic fabric and diversity
- Civic, educational and cultural infrastructure
- Unused land: the economic, cultural and environmental value of vacancy



EVIDENCE-BASED POLICYMAKING



IMAGES: DETROIT FUTURE CITY, CLEVELAND URBAN DESIGN COLLABORATIVE, TRF, LOCALDATA

EVIDENCE-BASED POLICYMAKING



BUILDINGS & NEIGHBORHOOD VITALITY

EVIDENCE-BASED PRIORITIZATION OF RESOURCES

- Actions for buildings: OCCUPANT SUPPORT, restore, stabilize, demolish, reuse, etc.



BUILDINGS & NEIGHBORHOOD VITALITY

EVIDENCE-BASED PRIORITIZATION OF RESOURCES

- Actions for buildings: occupant support, **RESTORE**, stabilize, demolish, reuse, etc.



BUILDINGS & NEIGHBORHOOD VITALITY

EVIDENCE-BASED PRIORITIZATION OF RESOURCES

- Actions for buildings: occupant support, restore, **STABILIZE**, demolish, reuse, etc.



BUILDINGS & NEIGHBORHOOD VITALITY

EVIDENCE-BASED PRIORITIZATION OF RESOURCES

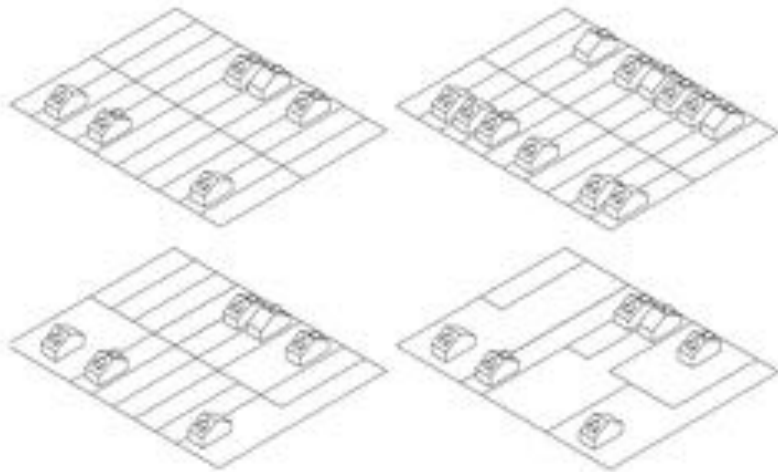
- Actions for buildings: occupant support, restore, stabilize, **DEMOLISH**, reuse, etc.



LOTS & NEIGHBORHOOD VITALITY

EVIDENCE-BASED PRIORITIZATION OF RESOURCES

- Vacant lot reuse: adjacent ownership, open space, water detention, productive landscapes, etc.





better data makes better places

tech for non-tech people

communication + understanding

remove barriers to entry





Mayor Karen Freeman-Wilson



Gary, IN



\$15,000 / demolition

**\$561 Billion in aid
to state/local**

**Digital
Accountability &
Transparency
Act**

Federal Support / Data Required



Broken intelligence

| Date | | Time | | Temp | | Humidity | | Wind | | Pressure | |
|------|-------|------|-----|------|------|----------|----------|------|------|----------|----------|
| Day | Month | Hour | Min | Temp | Temp | Humidity | Humidity | Wind | Wind | Pressure | Pressure |
| 1 | 1 | 12 | 00 | 25 | 25 | 60 | 60 | 10 | 10 | 1010 | 1010 |
| 1 | 1 | 13 | 00 | 26 | 26 | 65 | 65 | 12 | 12 | 1010 | 1010 |
| 1 | 1 | 14 | 00 | 27 | 27 | 70 | 70 | 15 | 15 | 1010 | 1010 |
| 1 | 1 | 15 | 00 | 28 | 28 | 75 | 75 | 18 | 18 | 1010 | 1010 |
| 1 | 1 | 16 | 00 | 29 | 29 | 80 | 80 | 20 | 20 | 1010 | 1010 |
| 1 | 1 | 17 | 00 | 30 | 30 | 85 | 85 | 22 | 22 | 1010 | 1010 |
| 1 | 1 | 18 | 00 | 31 | 31 | 90 | 90 | 25 | 25 | 1010 | 1010 |
| 1 | 1 | 19 | 00 | 32 | 32 | 95 | 95 | 28 | 28 | 1010 | 1010 |
| 1 | 1 | 20 | 00 | 33 | 33 | 100 | 100 | 30 | 30 | 1010 | 1010 |
| 1 | 1 | 21 | 00 | 34 | 34 | 100 | 100 | 32 | 32 | 1010 | 1010 |
| 1 | 1 | 22 | 00 | 35 | 35 | 100 | 100 | 35 | 35 | 1010 | 1010 |
| 1 | 1 | 23 | 00 | 36 | 36 | 100 | 100 | 38 | 38 | 1010 | 1010 |
| 1 | 1 | 24 | 00 | 37 | 37 | 100 | 100 | 40 | 40 | 1010 | 1010 |
| 1 | 1 | 25 | 00 | 38 | 38 | 100 | 100 | 42 | 42 | 1010 | 1010 |
| 1 | 1 | 26 | 00 | 39 | 39 | 100 | 100 | 45 | 45 | 1010 | 1010 |
| 1 | 1 | 27 | 00 | 40 | 40 | 100 | 100 | 48 | 48 | 1010 | 1010 |
| 1 | 1 | 28 | 00 | 41 | 41 | 100 | 100 | 50 | 50 | 1010 | 1010 |
| 1 | 1 | 29 | 00 | 42 | 42 | 100 | 100 | 52 | 52 | 1010 | 1010 |
| 1 | 1 | 30 | 00 | 43 | 43 | 100 | 100 | 55 | 55 | 1010 | 1010 |
| 1 | 1 | 31 | 00 | 44 | 44 | 100 | 100 | 58 | 58 | 1010 | 1010 |

paper barriers

Enter LocalData

**Street-level
geographic
data collection**



DEMO



So easy, even your *mayor* can use it!



Track progress

Re-evaluate conditions

Strategic work

Target investment

analyzed 58,000+ properties

Gary, Ind. to Receive \$6.6 million of \$15 million allocated to address blighted homes



Gary, IND. – Lt. Governor Sue Ellspermann today announced that five Indiana cities received a combined award of more than \$15 million to help eliminate (blighted) and abandoned homes in these communities through the Hardest Hit Fund Blight Elimination Program (BEP). The five initial cities are East Chicago, Gary, Hammond, Indianapolis and Lawrence. They are the successful applicants in the first of six rounds of funding that will make a total of \$75 million available for blight elimination to reduce foreclosures.

City of Gary officials received word earlier today that it will receive \$6.6 million. Mayor Freeman Wilton said

Awarded \$6.6 million



Data is an engagement opportunity



Stack of papers

Large sheet of paper with grid pattern

Bin 1: [Faint text]

Bin 2: [Red bin with green sticky note]

Bin 3: [Faint text]

Bin 4: [Faint text]

Bin 5: [Faint text]

Bin 6: [Faint text with green sticky note]

Bin 7: [Faint text with green sticky note]

Bin 8: [Faint text with green sticky note]

Printer

Cardboard box

Cardboard box

Bin 9: [Faint text with green sticky note]

Cardboard box

GARY PARCEL SURVEY

Gary survey results

58,235

Parcels surveyed

Is there a structure?



Property condition



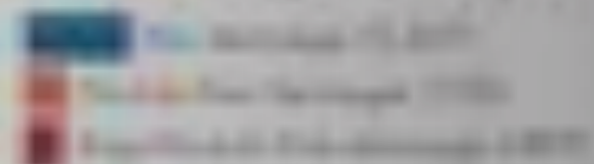
Distributions over time



Ownership



Fire damage on blighted buildings



Reports, maps, and data

prashant@localdata.com



Get in touch!

MOTOR CITY MAPPING

- Surveyed every parcel of land in Detroit: Over 375,000
- Initiated by Hardest Hit Fund
- \$100M to MI, \$52M to Detroit





Motor City Mapping Macrohoods



**DETROIT
URBAN
DEVELOPMENT
CORPORATION**



MOTOR CITY MAPPING

MOTOR CITY MAPPING

YES BUILDING

- Occupancy
- Building type (industrial, residential, commercial, etc.)
- # of units
- Condition (Good, Fair, Poor, Suggest Demolition)

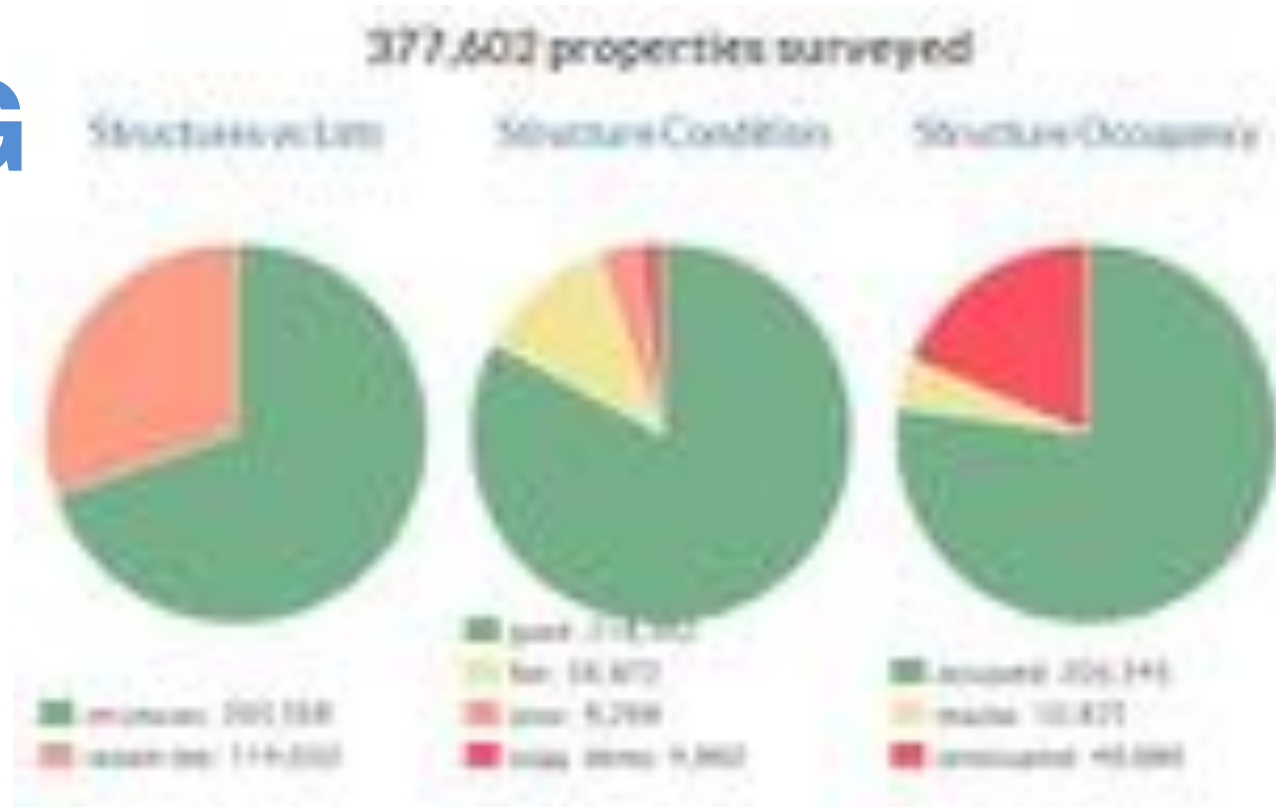
NO BUILDING

- Site use (garden, vacant lot, side lot, parking lot, etc.)
- Maintenance level
- Dumping?



MOTOR CITY MAPPING

Stats



DETROIT HISTORIC RESOURCE SURVEY

- Goal: Provide preservation perspective to Motor City Mapping; inform demolition decisions in Detroit
- 18,000 properties surveyed
- Two weeks, volunteers, smartphones
- Asked just three questions about:
 - Architectural Integrity
 - Neighborhood Character
 - Block intactness





SNOHOMISH COUNTY CHARACTER STUDIES











AGE



FORMTYPE



INTEGRITY



CHARACTER



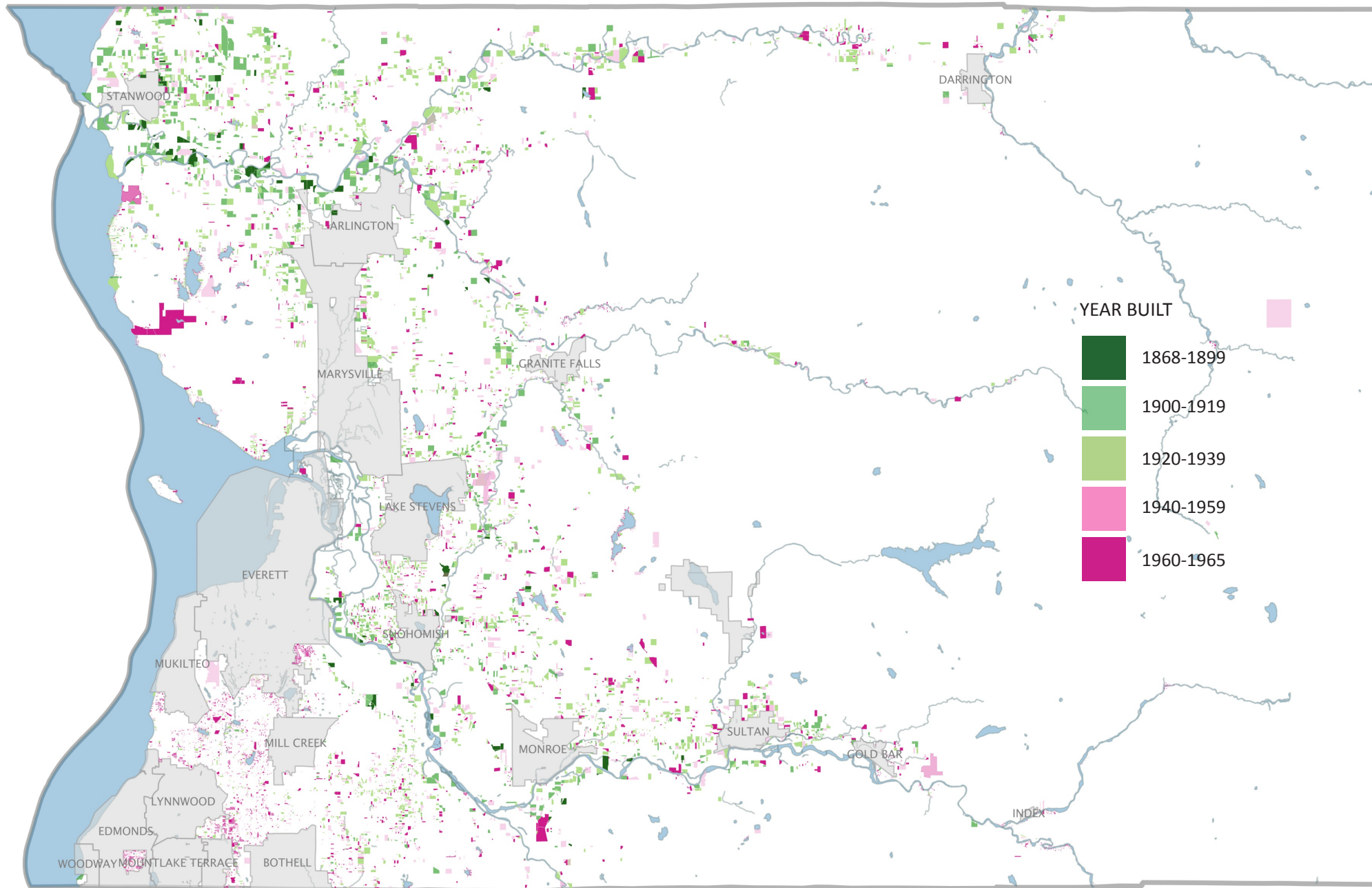


1

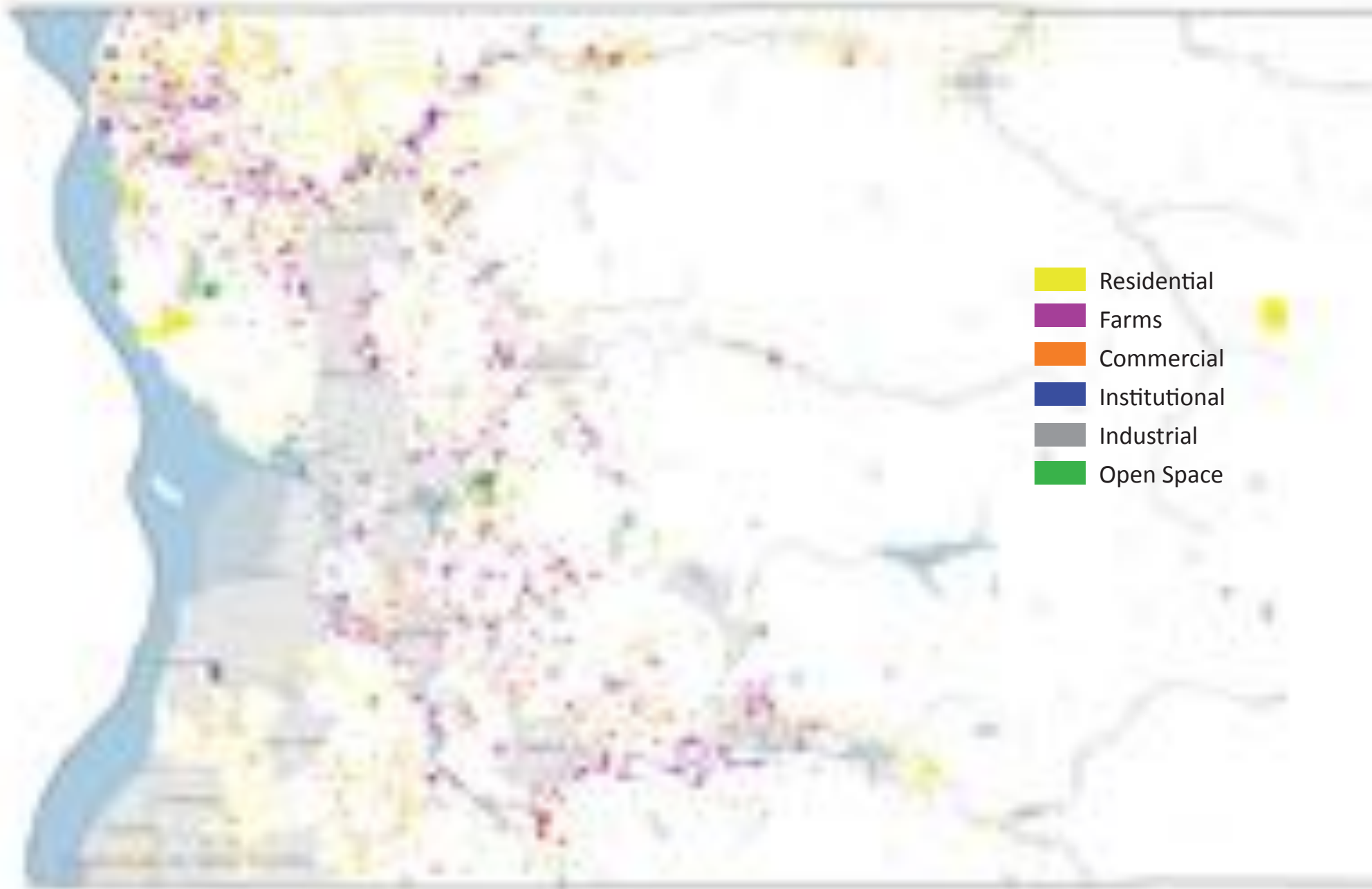
2



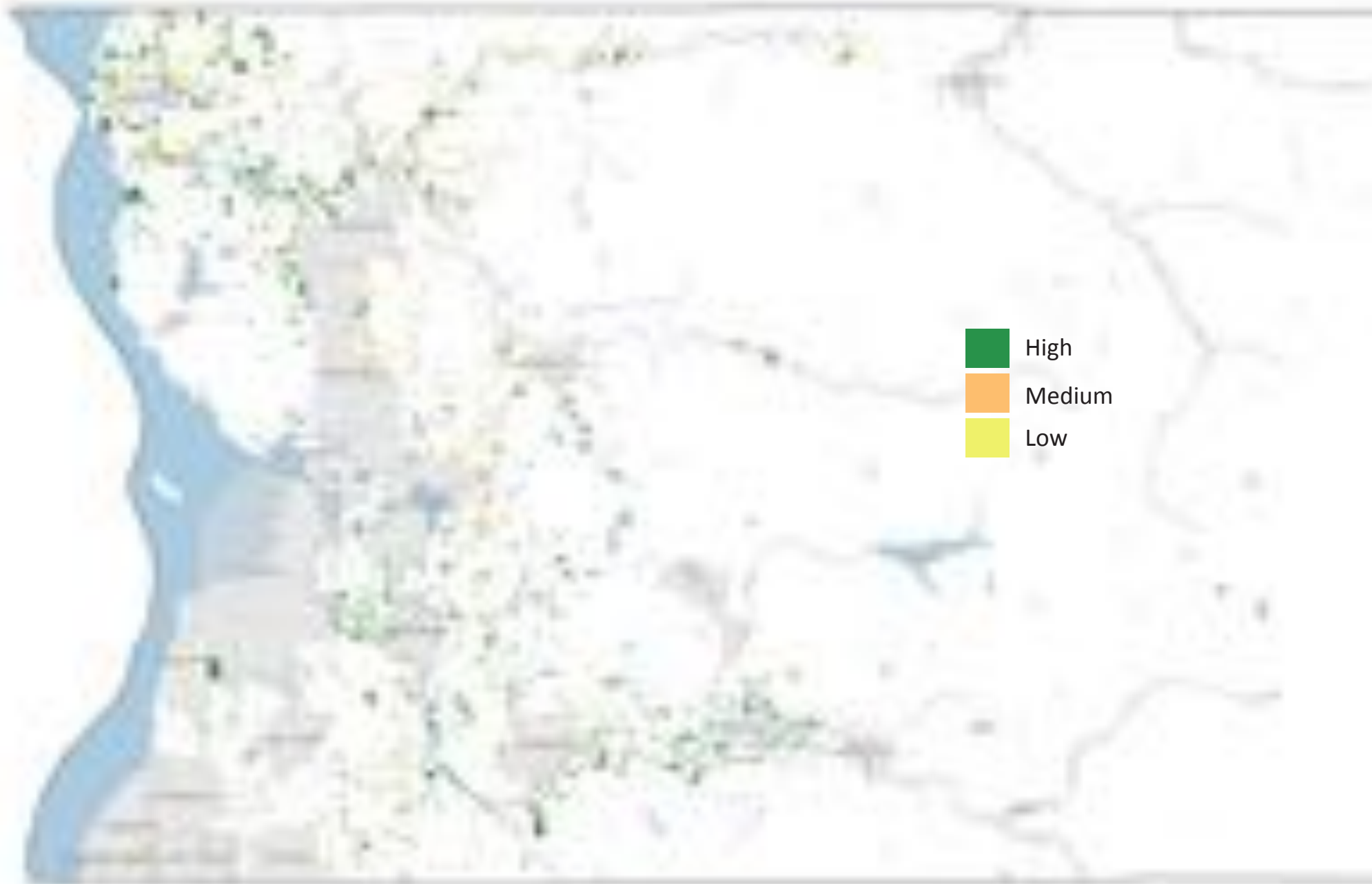
AGE



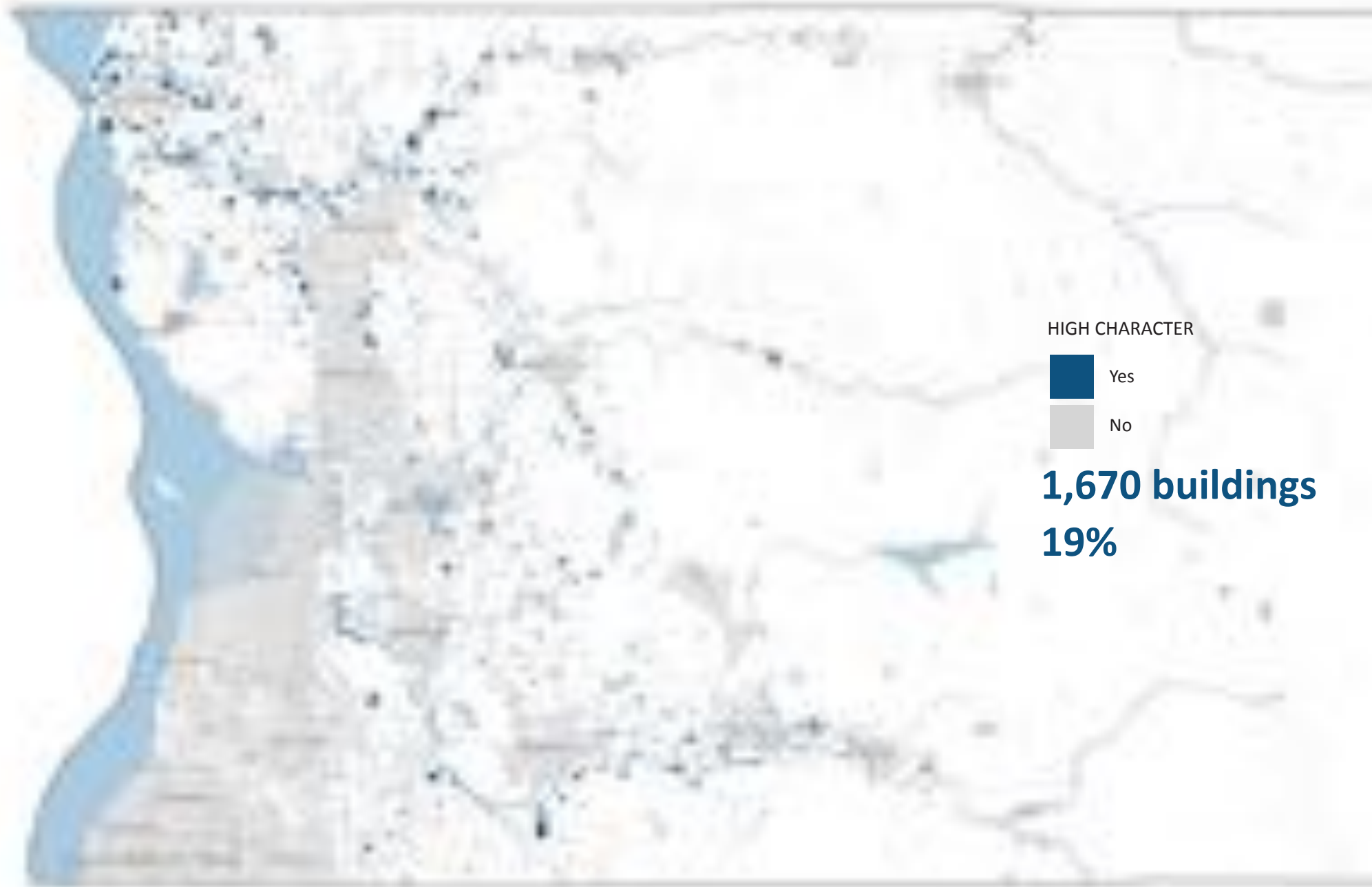
FORMTYPES



INTEGRITY



CHARACTER



HIGH CHARACTER



1,670 buildings
19%

HOTSPOTS



Age

+



Integrity

+



Character

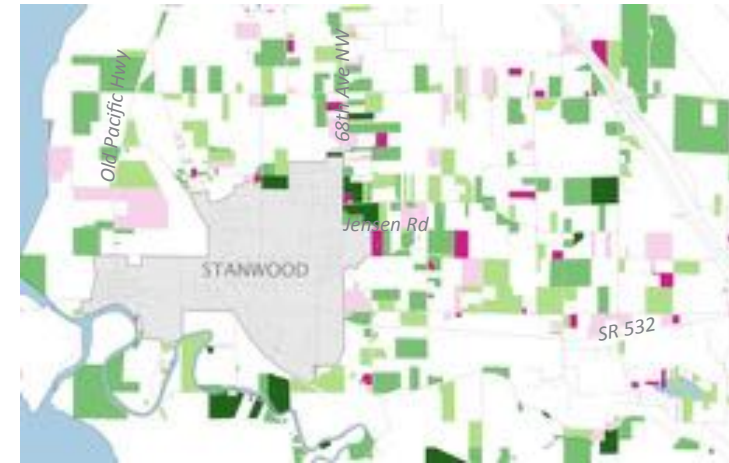
HOTSPOTS



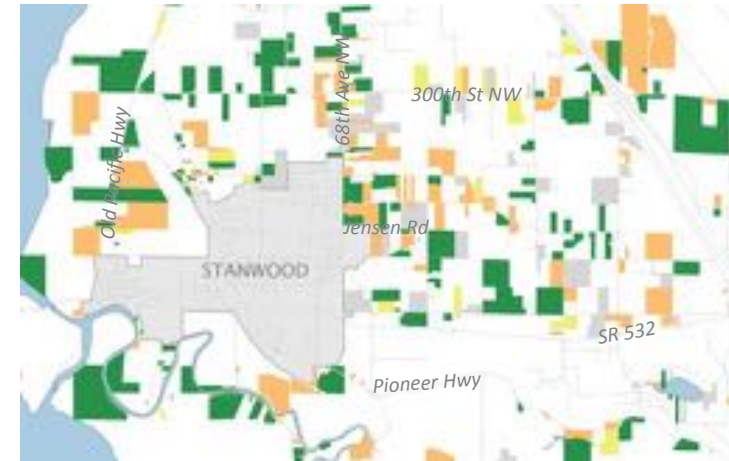
HOTSPOT: STANWOOD

- Single-family houses and historic farms constructed between 1900 and 1939
- Earlier houses north and south of Stanwood

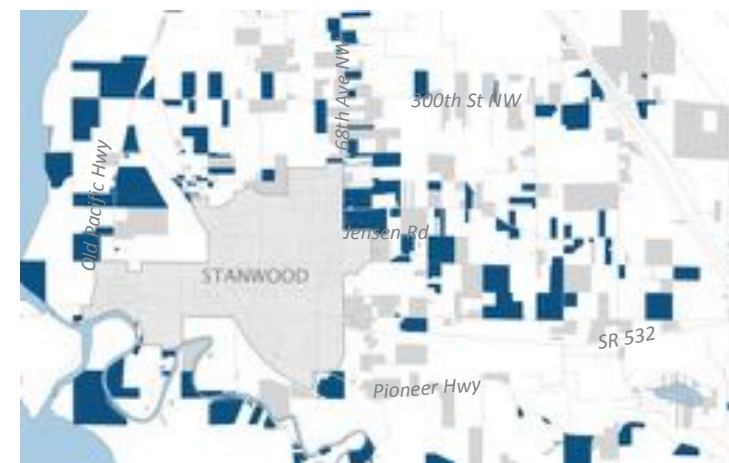
AGE



INTEGRITY



CHARACTER



HOTSPOT: STANWOOD



| _ID | ADDRESS | YRBUILT | FORMTYPE | INTEGRITY | CHARACT |
|-----------|----------------|---------|-----------------------------|-------------|---------|
| 400401400 | 34924 SR 2 | 1957 | Single-family house | High | |
| 200200900 | 35722 REESE R | 1932 | Single-family house | Medium | |
| 400402200 | 35127 REESE R | 1920 | Single-family house | Not-visible | |
| 400400600 | 35330 SULTAN S | 1946 | Single-family house | High | High |
| 400101100 | 35502 SULTAN-S | 1930 | Hist. farm bldgs | Not-visible | |
| 400100800 | 35128 SULTAN S | 1920 | Single-family house | High | High |
| 500200400 | 35621 136TH S | 1909 | Single-family house | Not-visible | |
| 400401200 | 34724 SULTAN S | 1920 | Single-family house | Medium | |
| 400100700 | 35131 SULTAN S | 1920 | Hist. farm bldgs | High | |
| 500305400 | 35409 STATE RO | 1962 | Traditional commercial bldg | High | |
| 400400300 | 35409 SR 2 | 1965 | Single-family house | Medium | |
| 500304400 | 35517 REESE R | 1920 | Hist. farm bldgs | Medium | |
| 200200500 | 35528 REESE R | 1957 | Hist. farm bldgs | High | |
| 300100100 | 35426 REESE R | 1922 | Hist. farm bldgs | Medium | |
| 500200800 | 35621 SULTAN S | 1906 | Hist. farm bldgs | High | High |
| 400102200 | 35329 SULTAN S | 1904 | Hist. farm bldgs | High | |
| 500300100 | 14018 363RD A | 1923 | Single-family house | Medium | High |
| 500301100 | 14100 363RD A | 1948 | Single-family house | High | High |
| 500301600 | 35812 SULTAN S | 1922 | Single-family house | Not-visible | |
| 500301300 | 35621 SULTAN S | 1925 | Single-family house | High | |
| 500400800 | 36821 143RD P | 1946 | Single-family house | High | High |
| 500401500 | 14201 363RD A | 1924 | Hist. farm bldgs | High | High |
| 500402200 | 36429 143RD P | 1905 | Hist. farm bldgs | Medium | |
| 500404800 | 14525 367TH A | 1900 | Single-family house | High | High |
| 500404500 | 36913 144TH S | 1904 | Single-family house | Medium | |
| 500404600 | 36901 144TH S | 1910 | Single-family house | Medium | High |

Relocal

80 metrics | 8 categories



Relocal



Fiscal Responsibility



Economic Opportunity



Engagement



Real Estate



Neighborhood Character



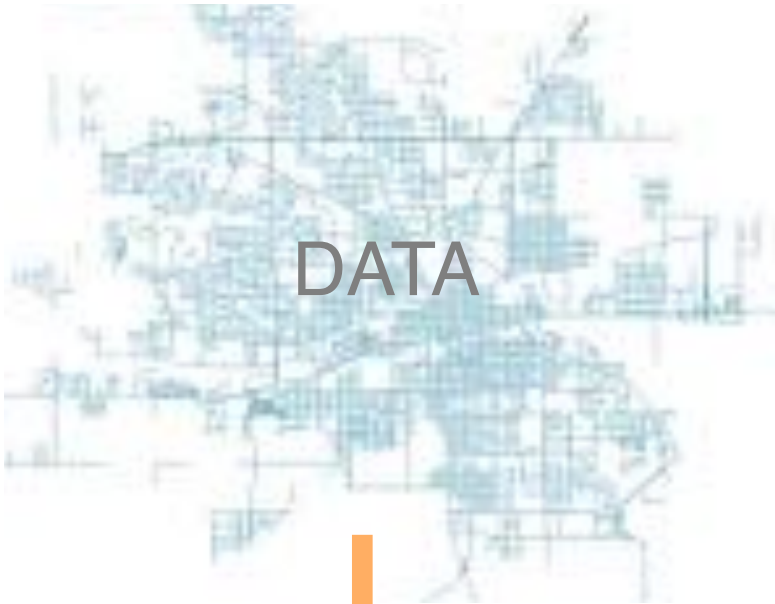
Environment



Stability



Walkability



Vacant Building Recommendations

- Rehab and reuse
- Stabilize and mothball
- Defer decision
- Raze and recycle



Detroit

Photo: Emilie Evans



Vacant Lot Recommendations

- Infill
- Contributing reuse
- Environmental reuse
- Defer decision

Photo: Cara Bertron

Relocal Community Engagement

**1 Community
Priority
Survey**

2 Field Survey

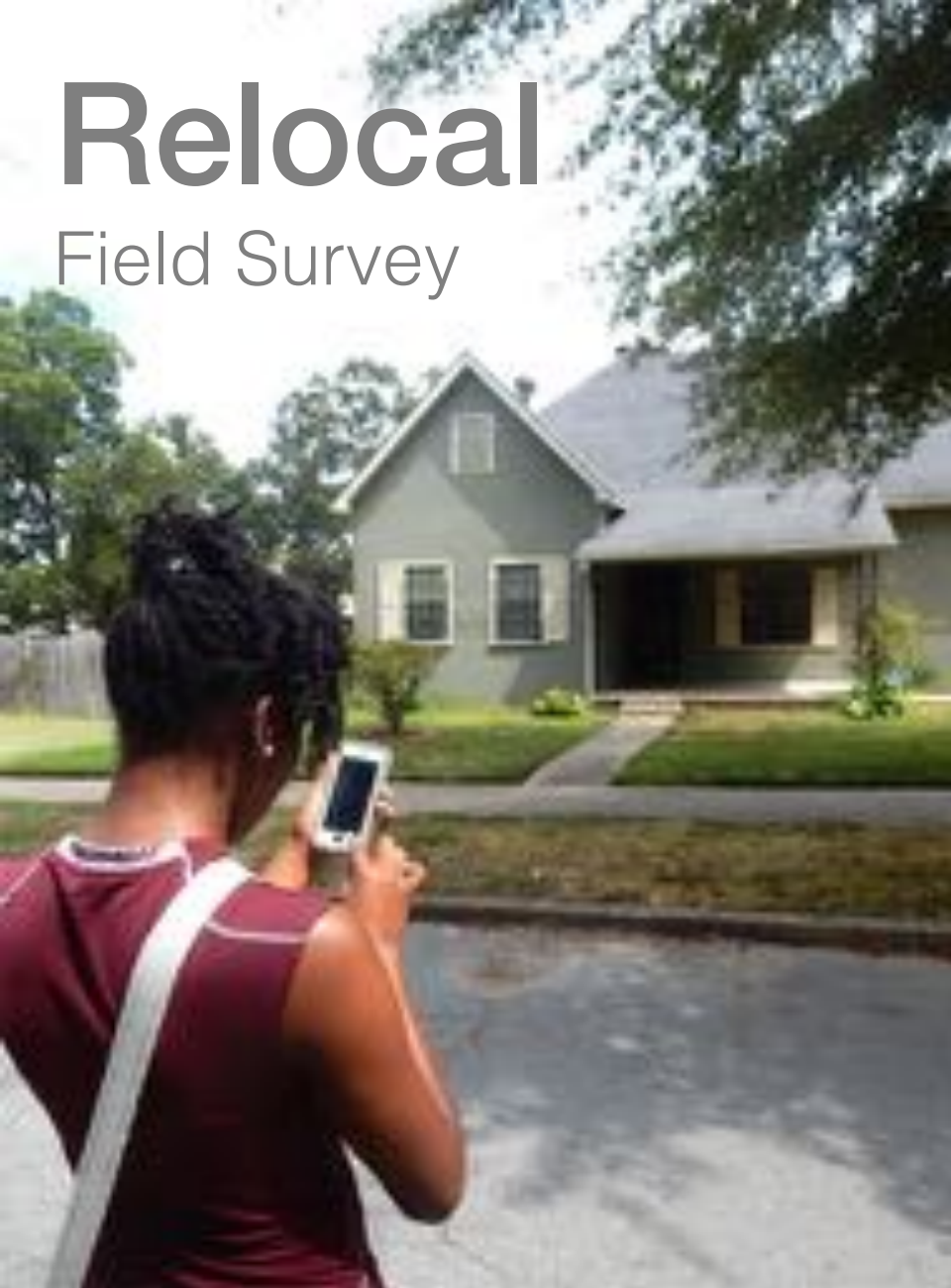
Relocal

Field Survey



Relocal

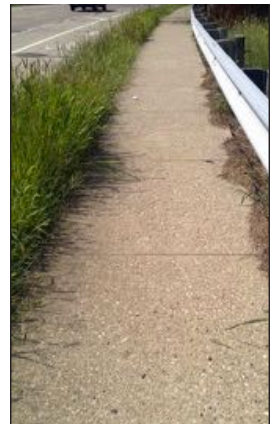
Field Survey



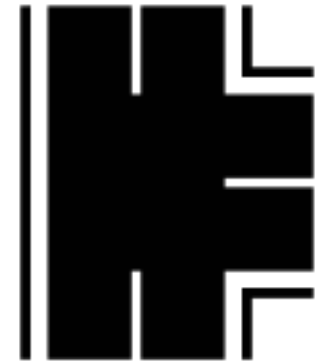
LocalData

Relocal

Field Survey



Survey Metrics Span Fields



Community Planning



14th Street Community Garden- Construction – April 2012



14th Street Community Garden – Completed



460 Massachusetts Avenue – Prior to Renovation



460 Massachusetts Avenue - Completed



PUSH members at Construction Site



PUSH Buffalo's History of Community Planning



**PUSH BUFFALO
COMMUNITY
CONGRESS**

00000000

MARCH 6 • 6-8PM
271 GRANT ST.

JOIN YOUR NEIGHBORS IN
MAPPING OUT CHANGES THAT
NEED TO HAPPEN ON YOUR
STREET, ON YOUR BLOCK, AND
IN YOUR COMMUNITY

PLANNING • EMPOWERING







WHAT SHOULD HAPPEN AT SCHOOL 77?

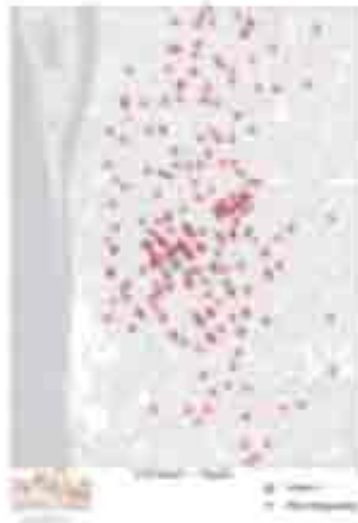
WEDNESDAY, SEPTEMBER 10 • 6PM
LORETTO MINISTRY CENTER
301 14TH STREET

WE NEED YOUR INPUT
TO CREATE A PLAN
FOR SCHOOL 77 THAT
WORKS FOR ALL OF US.



WE KNOW WHAT WE NEED WHERE WE LIVE

School 77 Community Planning



Major Themes for School 77 that have been identified were **Affordable Housing**, Community Center, **Culture**, Education, and **Recreation + Youth**





Community Facilities



Up Next: Group Discussion!

- What do you want to measure in your communities?
- What have you heard of the case study metrics that resonate with you?
- What data do you use to make decisions in your communities currently? What would help better inform those decisions?

Today's Survey Questions!

First: Take a photo of the building

- Is there a building? Yes/No
- If yes:
 - Building condition?
 - Building type?
 - Architectural character?
- If no:
 - Land use?
 - Maintenance level?
- All:
 - Street trees?
 - Sidewalk condition?

Optional checkboxes

- Community gathering space?
- Permeable pavement or other green infrastructure?
- Rehab or other investment happening?
- Graffiti?

Use this link to connect to today's survey on your own smart device:

<http://bit.ly/npsgdata>



Cara Bertron
Chair
Preservation Rightsizing Network

Real Estate Lab Coordinator
SCIDpda

cara.bertron@gmail.com
512-913-9680



Aaron Bartley
Executive Director &
Co-founder
PUSH Buffalo

aaron@pushbuffalo.com
716-884-0356



Prashant Singh
CTO
LocalData

prashant@localdata.com
415-944-7727



Emilie Evans
Director, Rightsizing Cities
Initiative
PlaceEconomics

Co-founder
Brick + Beam Detroit

Leadership Team
Preservation Rightsizing Network

eevans@placeeconomics.com
202-413-3424



Nicholas M. Hamilton
Director of Urban Policy
Executive Director, Legacy
Cities Partnership
*The American Assembly,
Columbia University*

Leadership Team
Preservation Rightsizing Network

nmh2123@columbia.edu
212 870 3500

